



Collective Worship Policy

Updated September 2023

To Be Reviewed September 2024

COLLECTIVE WORSHIP POLICY FOR SELATTYN C. OF E. PRIMARY SCHOOL

Worship is...

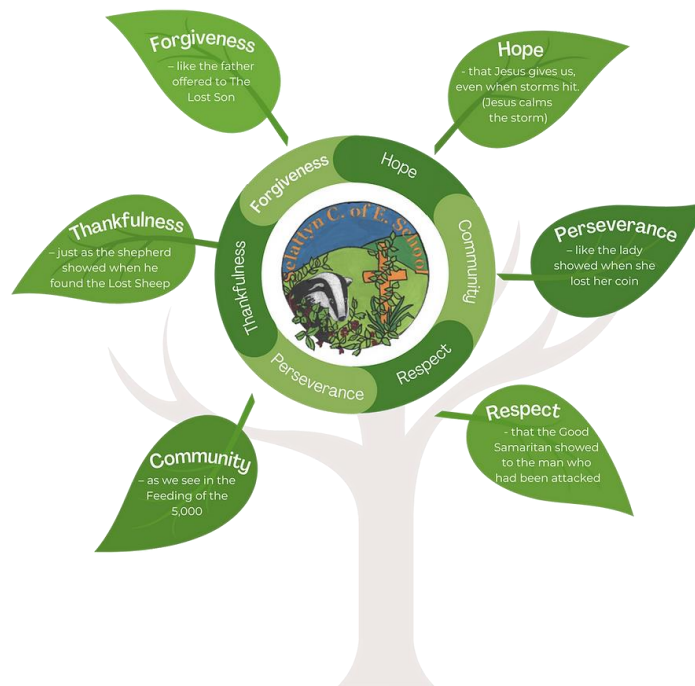
Giving honour and reverence to a supreme being.

Christian worship is concerned with bringing praise, prayer,

Thanksgiving and adoration to God.

It is an activity of response: in words, actions and thoughts.

OUR VISION



As a loving community, our vision is to nurture each individual in our care, giving them the skills, resilience and hope to succeed and flourish, both academically and spiritually, in God's ever changing world.

GENERAL PRINCIPLE/MISSION STATEMENT

Collective Worship at Selattyn C. of E. Primary School plays an essential part in the life of our school. It offers the whole school community opportunities to experience and reflect on the work, worth and worship of our school.

This is set within the context of the corporate community of our school which values individuality and affirms every individual's unique contribution, regardless of age, sex, ability, background or religion.

LEGAL REQUIREMENTS

Our daily Act of Collective Worship is in accordance with the Trust Deed of the school. This requires worship to be **consistent with** the principles and practices of the Church of England.

We also take into account DfEE legislation:

- Worship will be
- appropriate to the age, aptitude and family background of pupils
 - provided in a variety of settings, groupings and timings, with a variety of leaders

We recognise the right of withdrawal from Worship for pupils, at the request of parents and for staff, **but** currently enjoy the full support of the whole community.

1988 Education Act

We also take into account the 1988 Education that states,

‘....all pupils in attendance at a maintained school shall in each school day take part in an act of collective worship’,

AIMS OF COLLECTIVE WORSHIP

Worship

- to enhance the spiritual development and response of pupils
- to foster reflection, meditation, prayer and silence
- to create an atmosphere in which God is both normal and natural
- to foster a reverential attitude to God, the Divine, the transcendent
- to foster empathy and imagination, enabling pupils to participate in a variety of ways
- to explore and enjoy praise, prayer, and the rituals of Christianity (the Anglican tradition in particular)
- to affirm the Christian faith and the Christian status of Jesus as Son of God
- to enable pupils to reflect on the experiences of Christian adherents
- to foster and value a search for a faith to live by
- to learn about and reflect upon Christian Teaching, Biblical material and Christian festivals, in a way that relates to the pupils’ experience and to living together in community
- to worship together rather than apart (whilst taking into account the multi-cultural nature of every school community)
- to provide an evocative setting for worship, with comfort for pupils and staff and appropriate resources, including a spiritual focus.
- to recognise the beliefs and culture of others
- to develop a sense of community and shared values
- to consider the needs of others and to foster charitable works
- to be challenging and inspiring
- to celebrate the highest achievements of the human spirit
- to celebrate achievements of members of the school that are held to be of worth
- to foster a thought-provoking atmosphere allowing for spiritual reflection and response

MANAGEMENT OF COLLECTIVE WORSHIP

The Foundation Governors have responsibility to ensure the Trust Deed of the school is honoured, in conjunction with the Governing Body, Headteacher, staff and school community. The worship policy created articulates the management and delivery of this area of the curriculum. Parents are also kept informed through the School Prospectus.

The worship co-ordinator has responsibility for managing this area of the curriculum on a day to day basis, ensuring all legal requirements are complied with. This involves the production of a coherent programme for Collective Worship, which has continuity of Christian teaching and experience and such breadth and balance as is appropriate to the school community.

Records of content are kept centrally for whole-school worship and it is the responsibility of staff to liaise with the worship co-ordinator, so that full records and knowledge of the actual implementation of the worship programme are ensured.

The worship co-ordinator also keeps in touch with developments in the subject and acts in an advisory capacity to colleagues, ensuring that worship is prioritised on the School Development Plan, to allow for INSET and resource development. The Worship Co-ordinator works closely with the Diocese to ensure up to date provision and collaborative best practice.

Monitoring the quality of Collective Worship is an on-going process to ensure that effective review can take place.

At present the following arrangements are in place:

Section 48 Statutory Inspection of Anglican & Methodist Schools (SIAMS)

All church schools, whether they are Voluntary Aided (VA), Voluntary Controlled (VC) or Foundation (F) will be inspected on collective worship and the impact this has on the whole school community (IQ Three of the SIAMs 2023 schedule). The core question of this IQ is how is collective worship enabling pupils and adults to flourish spiritually, the ways in which collective worship. Here at Selattyn Primary School this inspection will evaluate the school's collective worship on the following:

- that it is inclusive, invitational and inspiring
- offers the opportunity, without compulsion, to all pupils and adults to grow spiritually through experiences of prayer, stillness, worship and reflection
- enables all pupils and adults to appreciate that Christians worship in different ways, for example using music, silence, story, prayer, reflection, the varied liturgical and other traditions of Anglican/Methodist worship, festivals and, where appropriate, the Eucharist.
- helps pupils and adults to appreciate the relevance of faith in today's world, to encounter the teachings of Jesus and the Bible and to develop their understanding of the Christian belief in the Trinitarian nature of God and its language.
- enables pupils as well as adults to engage in the planning, leading and evaluation of collective worship in ways that lead to improving practice. Leaders of worship, including clergy, have access to regular training.
- encourages local church community partnerships to support the school effectively in developing its provision for collective worship.

The right of withdrawal

We recognise the right of withdrawal from worship for pupils at the request of parents and for staff, but encourage discussion with the relevant individuals to ensure that there is understanding of the aims and objectives of worship, and strategies for minimising the disruption caused by any withdrawals.

The Headteacher Mr Ross Shepherd is co-ordinator of Collective Worship.

Policy Updated September 2023

To be reviewed September 2024